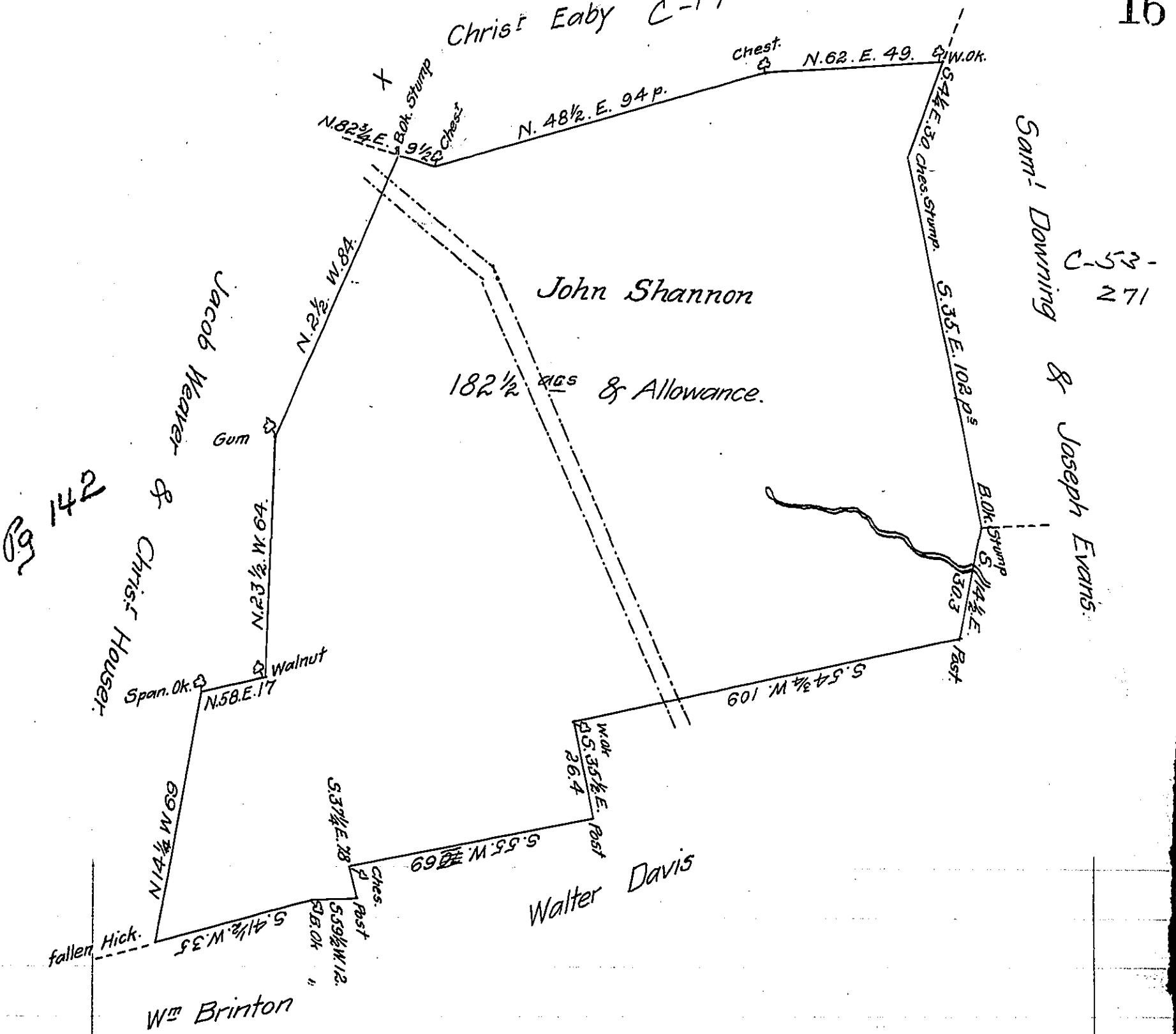


Christ Eaby C-17-58



A Draught of a Tract of Land Situate partly in Bart & partly Sadsbury Township Containing 182 1/2 Acres & the usual Allowance Surveyed for Jacob Rohrer August 25th 1809.

p^r Tho^s Crawford

The above is a part of 213^{as} & 120^p Surveyed in pursuance of a Warrant dated the 24th day of May 1750 Granted unto John Shannon.

p^r Jacob Hibshman D.S.

To Andrew Porter Esq^r
Surveyor General.

IN TESTIMONY that the above is a copy of the original remaining on file in the Department of Internal Affairs of Pennsylvania, made conformably to an Act of Assembly approved the 16th day of February, 1833, I have hereunto set my Hand and caused the Seal of said Department to be affixed at Harrisburg, this tenth day of December 1906.

Isaac R. Brown
Secretary of Internal Affairs